



Specifications

Hardware

- Supported Reader Types: TAC Biometric, TAC iButon, Wiegand compatible.
- Warranty: One year
- Communications: RS-485, single pair, stranded, twisted overall shield, 18-20 AWG, 2000 ft. max., Ethernet TCP/IP
- Lock Output: Form "C" Relay, 30VDC @ 1A
- Two Aux. Outputs: Form "C" Relay, 30VDC @ 1A
- Handicap Button Input: normally open, momentary closure
- Exit Button Input: normally open, momentary closure
- Door Contact Input: normally closed
- Operating Temp: -35°C to 70°C
- Power Requirements: 12VDC, 250 mA (not including lock/reader)

Software

- Operating System: Windows 95/98/ME/NT/2000/XP
- Reader Capacity: 60 doors / 120 readers (includes Exit readers)
- Cardholder Capacity: 4800
- Access Schedule: 6 User Programmable
- Access Profile: 1000 User Programmable
- Unlock Schedule: 60 User Programmable
- Timed Anti-Passback: 1 to 255 minutes
- Holidays: 60 User Programmable

Horns / Strobes



TA-2705

TA-2705	
Features:	Specifications:
90dBA Sound Output @ 24V	Input Terminals: 12 to 18 AWG
Compact Design	Mounting Surface: Single Gang Backbox
Pulsed Tone	Operating Temperature Range: 14°F to 140°F (-10°C to 60°C)
1.5 cd add-on strobe available (secondary signalling)	Operating Voltage: 12 to 24 VDC and full wave rectified unfiltered
12mA Average Current Draw	



**TA-2704
TA-2703 (Waterproof)**

(TA-2704) & (TA-2703)	
Features:	Specifications
- Lower current draw (45mA max) More devices per loop	Walk Test: TAC horns only work on "walk tests" with time durations of 4 seconds or greater.
- Universal mounting plate included	Input Terminals: 12 to 18 AWG
- Field-selectable horn tones (Electromechanical 3kHz, High/Low dBA output)	Dimensions: Horn with universal mounting plate 5" x 5 5/8" x 1 5/16" Horn without mounting plate 2 15/16" x 5 5/16" x 1 5/16"
	Weight: 7.2 oz
	Mounting: 4" x 4" x 1 1/2" or 2" x 4" x 1 7/8" standard boxes
	Indoor Operating Temperature: 32°F to 120°F (0°C to 49°C)
	Maximum Humidity: 95% as tested per UL464
	Weatherproof Operating Temperature 32°F to 150°F ULC -40°C to 66°C
	Voltages: 12 or 24VDC and FWR unfiltered Operating voltage range* 12V: 10.5-17V; 24V: 20-30V Operating voltage range* (with Sync Circuit module, MDL) 12V, 11-17V; 24V, 20-30V

Installation: TAC products offer installation ease which also lowers the installed cost. By taking up no room in the back box, TAC strobes and horn/strobes make wiring connections simpler and faster. Each TAC includes a universal mounting plate for 4" square and single gang back box mounting. Accessory mounting plates are also available for small footprint or surface mount applications.

Flexibility: TAC offers the flexibility to meet a broad range of requirements. The TAC horns feature a number of field-selectable/reversible horn tones.

Aesthetics: To meet building owner aesthetic requirements, TAC incorporates a stylish, low profile design. And this aesthetic is consistent across all TAC wall-mount products.



TA-2701

TA-2701	
Features:	Specifications
90dB Single Gang Mounted	5-24 VDC (25mA @ 24VDC



360 Carlingview Drive
Toronto, Ontario,
Canada, M9W 5X9
Tel: (416) 798-0611
Fax: (416) 798-1349
<http://www.kmthomas.com>

Horns / Strobes



TA-2707



TA-2706

(TA-2706) & (TA-2707)	
Features:	Specifications:
Operates on either 12V or 24V	Strobe: =150mA max
Lower Current Draw	Horn/Strobe: =200mA max
Easy DIP switch selection for horn options	Strobe and horn/strobe with small footprint plate: 3 3/8 x 5 5/8 x 2 5/16
Easy mounting with QuickClick	Horn with universal mounting plate: 5 x 5 5/8 x 1 5/16
	Mounting: 4 x 4 x 1 1/2 or 2 x 4 x 1 7/8 standard boxes
	Waterproof (horn and horn/strobes) Operating Temperature: 32°F to 150°F (0°C to 66°C) (outdoor strobe only) -40°F to 158°F (-40°C to 70°C) ULC Canadian Models -40°C to 66°C
<p>Performance: TAC selectable candela wall-mount strobes and horn/strobes offer key performance features long associated with the TAC name. The selectable candela strobes and horn/strobes offer average current draws that are not only lower than conventional fixed-candela TAC products, but also lower than similar selectable candela products. By consuming less current, the ability to connect even more devices per loop is possible, resulting in a lower installed cost.</p>	
<p>Installation: TAC selectable candela strobes and horn/strobes offer the same installation-friendly features synonymous with the TAC name, such as the option of 2- and 4-wire operation; the ability to use standard size backboxes with no encroachment into the box; and, universal mounting incorporating the labor-saving QuickClick feature. Such labor-saving features make wire connections simple and fast, further reducing installed cost.</p>	
<p>Flexibility: TAC multi-candela strobes and horn/strobes offer the broadest range of candela options. In addition, the selectable candela strobes and horn/strobes can operate on either 12V or 24V, with no setting required; the device recognizes and self-adjusts to the correct current automatically. Temporal 3 or Continuous tone options continue to be available, in either an Electro-Mechanical or 3kHz pattern.</p>	
<p>Aesthetics: TAC selectable candela strobes and horn/strobes incorporate the same stylish, low profile design of the conventional TAC products, for a consistent and aesthetically pleasing appearance across the entire product line.</p>	

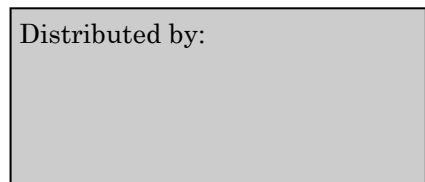
Accessories

Product #	Description
TA-2708	Single Gang Adaptor Plate
TA-2709	Surface Box



360 Carlingview Dr.
Toronto, Ontario
Canada, M9W 5X9
Tel: (416) 798-0611
Fax: (416) 798-1349
www.kmthomas.com

Distributed by:





The Maestro Security Management System

Introduction

TAC's Maestro Security Management Software package for Windows® breaks the boundaries of traditional access control software with its revolutionary set of features and built-in development tools. Maestro is designed for facilities that require flexibility, expandability, and a powerful feature/option set comparable with systems available with a much higher price tag.



Utilizing TAC's powerful TA-2490 Two Door Controller, the Maestro system provides a completely integrated system capable of managing 512 card or biometric readers, 65,000 cardholders, and 4,096 auxiliary alarm inputs and relay outputs.

Maestro's architecture allows you to start off small and grow your system as much as needed without losing your original investment. Software is available with 8, 16, 32, 64, 128, 256, and 512 card reader capacity. You can easily upgrade at any time to add reader capacity or other software options, most of the time without re-installing any software.

Performance and Reliability

Maestro has been field proven with hundreds of systems installed worldwide. Some of our major clients include:

- Canadian Imperial Bank of Commerce
- Toronto Hospital for Sick Children
- Sunnybrook Hospital
- John Deere
- Coca Cola
- Johnson & Johnson
- CP Rail
- Gillette
- Sun Micro
- Ford Canada
- Nav Canada
- Beatrix Airport - Aruba
- Niagra Regional Police
- British Embassy – Peru
- American Express
- Daimler Chrysler
- Sheridan College
- America University of Sharjah, Sharjah UAE
- Honeywell





The Maestro Security Management System

Standard Features

- **Windows® Point & Click Interface:**
All devices can be activated with a simple click of the mouse.
- **Real Time Event Processing:**
No need to manually upload or download.
- **Auxiliary Input and Relay Output Control:**
Monitor and control other devices.
- **16 to 64 Floor Elevator Control:**
Individual floor access can be programmed.
- **Reader Lockout:**
Quickly disables readers in the event of an emergency without reprogramming.
- **Unlock Privilege:**
Managers can “double-swipe” their access card to keep door unlocked.
- **Auto Void/Validate:**
Program cards to be automatically activated or voided at a future date.
- **Report Templates:**
Can be created to avoid repetitive data entry of the same report.
- **Cardholder Templates:**
Can be created to avoid repetitive data entry of common cardholder data.
- **Macro Programming Language:**
Can be used to activate complex sequence of commands in one click.
- **TCP/IP Panel Connections:**
Program IP Address of remote TA-2490 controllers. Used in conjunction with CanLan TCP/IP controllers.





The Maestro Security Management System

Powerful Options

- **Multiple Operator Workstations:**
Maestro workstations can be connected across a Windows®TCP/IP network.
- **Dynamic Graphic Maps:**
Import DXF files or draw your own maps with built-in map editor. Maps display real time alarm status and support multiple zoom levels. Point & Click device icons.
- **Integrated CCTV Switcher Control:**
Control Panasonic or AD matrix switchers. Support for PTZ camera control.
- **Alarm Paging:**
Alarm messages can be transmitted to alphanumeric pager when PC is not manned.



- **Remote Site Controller Dial-Up:**
Can be used to manage remote systems without the need for a local PC at the site.
- **Remote System Management:**
Can be used to manage multiple Maestro systems, each with their own server, controllers, and database.
- **Remote System Alarm Monitoring:**
Individual Maestro systems can transmit alarm messages to one central location.
- **Integrated Photo ID Badging:**
Add cardholders to the database, assign access levels, capture image, and print a photo ID card in one process and without duplicate data entry.
- **Dynamic Photo ID Pop Up:**
Monitors reader activity and displays cardholder record with photo on Maestro screen for visual verification.



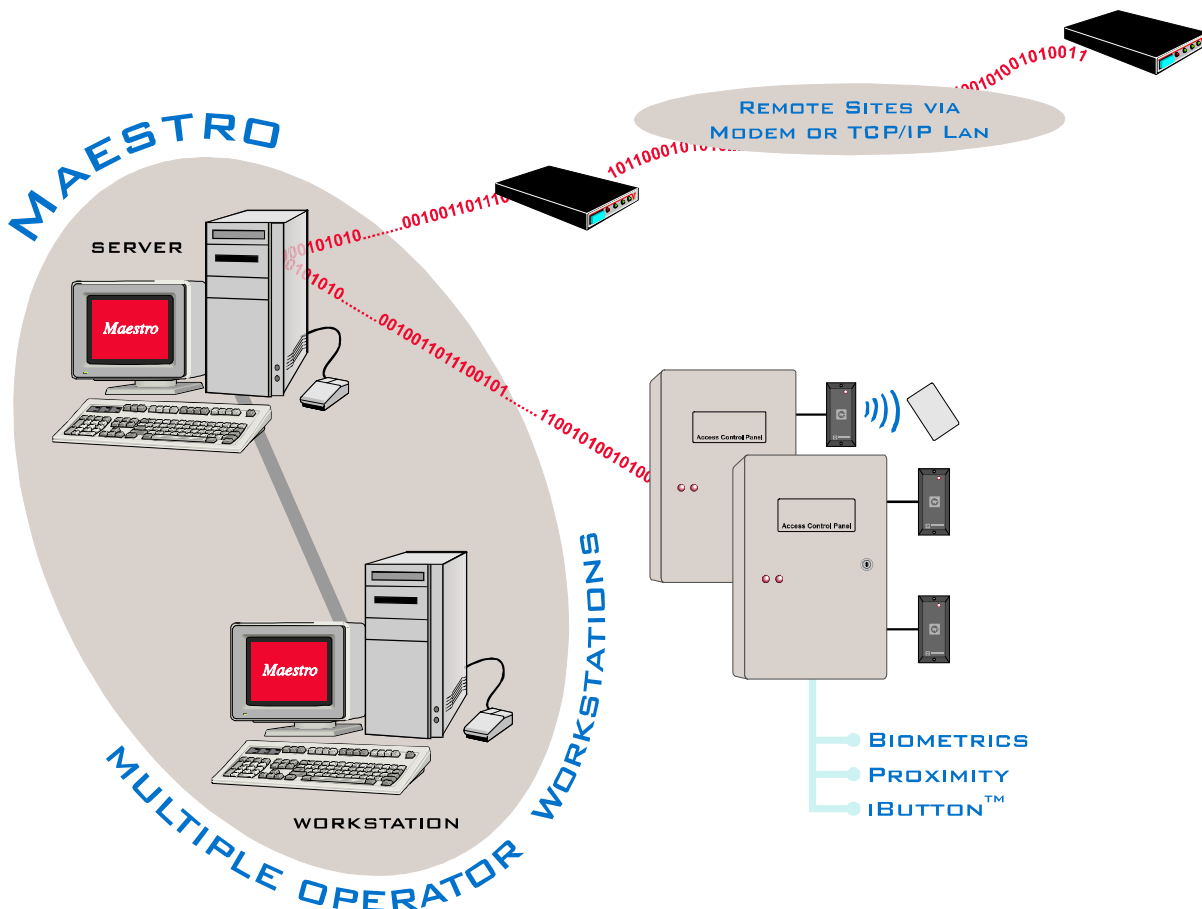
The Maestro Security Management System

Maestro 3rd Party Integration Tools

SAGE allows the functionality of Maestro to be expanded through the use of an extensive Application Programming Interface (API). Using the SAGE facility, software can be developed by the end-user or security dealer that interacts with the Maestro system and provides full access to Real Time Transactions, Reader & Point Commands, Database Records, and stored Historical Data.

Using the SAGE facility, software can be developed to address the "special" requirements which are encountered without the traditional problems associated with "custom" software. The SAGE specification is freely published by Cansec to allow the "extended" code to be developed by anyone with suitable programming skills.

Typical Maestro Configuration



Class II Rated Plug-In Power Supplies



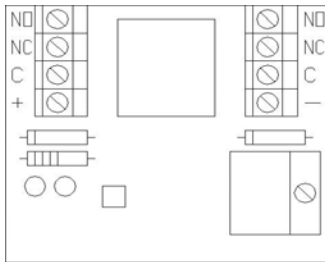
Part #	Voltage	Capacity
TA-2532-12	12VDC	1000mA
TA-2532-24	24VDC	500mA
TA-2532-16	16VAC	40VA



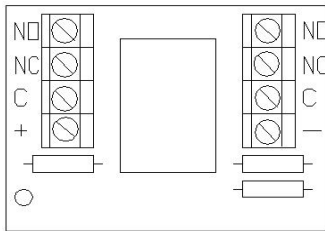
360 Carlingview Dr.
Toronto, Ontario
Canada, M9W 5X9
Tel: (416) 798-0611
Fax: (416) 798-1349
www.kmthomas.com

Distributed by:

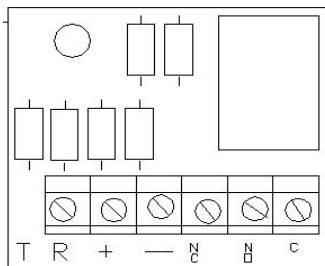
Relays



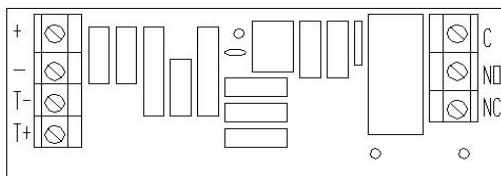
TA-2880-12 (6 to 24 Volt Relay)	
Electrical Spec.	Features
Activated by Voltage Between 6 to 24VDC	PCB Type
Current Draw: 42mA	Adhesive Foam Mounting Tape
DPDT Contact	Dimensions: Height: 0.55"
2A @ 12VDC	LED Status Indicator
	Polarity and Surge Diode



TA-2880-12A (12VAC Relay)	
Electrical Spec.	Features
12VAC, Coil	PCB Type
Max Switching Current: 2A @ 12V	Polarity and Surge Diode
DPDT Contact	Adhesive Foam Mounting Tape
	Dimensions: Height: 0.550"
	Width: 1.800" Length: 1.300"



TA-2870-12 (Sensitive Relay)	
Electrical Spec.	Features
12 VDC, Coil	PCB Type
Max Current: 2A at 30VDC	Polarity and Surge Diode
SPDT Contact	Adhesive Foam Mounting Tape
Sensitive Trigger: less than 1V and 1mA	Dimensions: Height: 0.7"
	Width: 1.5" Length: 1.5"

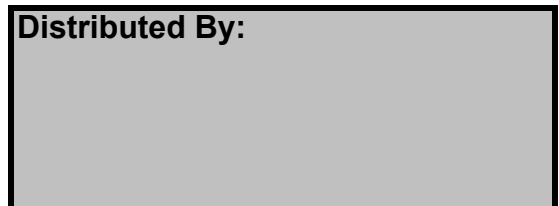


TA-2871 (Latching Relay)	
Electrical Spec.	Features
Operates from 12 or 24VDC	Activated by Positive or Negative Impulse
Current Draw: Idle: <12ma at 12VDC Active:<60ma at 12VDC	LED Status Indicator
SPDT Relay Output	Adhesive Mounting Tape
2amp. At 24VDC Contact	Dimensions: Length: 3.20"
	Width 0.95" Height: 0.60"



360 Carlingview Drive
Toronto, Ontario
Canada, M9W 5X9

Ph: 416-798-0611
Fax: 416-798-1349





Introduction.....

The Zodiac Lite Fingerprint Reader is a cost-effective biometric solution for single door/device applications for up to 90 users. The Zodiac Lite Kit comes with a single reader, door control module, and hand-held programmer. No cards, PC, or software are required.

Programming is easy.....

All programming and enrollment functions are preformed at the Zodiac Reader using the supplied Hand-Held Programmer. The programmer is equipped with two rotary switches numbered from 0 to 9, as well as ADD, DELETE, and ON/OFF buttons.

To place Zodiac into Program Mode, simply set both switches to "0" and apply the probe on the programmer to the programming port of the Zodiac reader. Then select one of the memory locations using the rotary switches on the programmer. Press the ADD button to enroll the user or DELETE button to remove the user's template from the reader.

Using Zodiac is easier ..

Because Zodiac Lite is performing 1:90 matching, no card or keypad entry is required. The Zodiac scanner continuously looks for fingers to authenticate. The user simply places their finger on the scanner for quick access to the door or device being controlled.

No prints ... No problem

It is a fact that a very small percentage of people cannot be enrolled due to injury or unreadable fingerprints. In this circumstance, a Zodiac Bypass Key can be programmed and issued. Users presenting a Bypass Key will not be required to scan their finger. Each system comes with 5 Bypass Keys.

Optional SmartLock door controller ...

For clients requiring historical audit data, Zodiac Lite can be used with the SmartLock Online door controller which stores up to 1000 time & date stamped transactions in memory.

Other applications ...

Zodiac Lite can be used for many other applications besides traditional door access control. The supplied Door Control Module can be used to enable or unlock other devices such as lockers, safes, and many other types of equipment. The applications are only limited by your imagination.

Specifications	Zodiac Lite Fingerprint Controller
Size:	4 1/2"(w) x 4 1/2"(h) x 2 1/4" (d)
Weight:	10 oz
Mounting:	Standard double gang electrical box
User Templates:	90
Programmer:	9V battery operated
Door Control Module:	Dry contact output, 30VDC @ 2A max. Exit button input, dry contact N/O
Warranty:	One year



360 Carlingview Dr.
 Toronto, Ontario
 Canada, M9W 5X9
 Tel: (416) 798-0611
 Fax: (416) 798-1349
 www.kmthomas.com

Distributed by:



TA-2490

TWO READER ACCESS CONTROL PANEL



FEATURES

- Two Card Readers, Magstripe or Wiegand
- Door Contact / Exit Button Inputs
- Selectable Lock Output, 12V or Dry Contact
- 2,000 Transaction Audit Buffer
- Built-in 12VDC Supply w/ Battery Charger
- Forced Entry / Held Open / Shunt Outputs
- 65,000 Cardholder Capacity
- Additional I/O, Two Inputs, Two Outputs

DESCRIPTION

TAC's **TA-2490 Access Control Panel** provides a cost-effective means of providing the ultimate in security management. Each TA-2490 can support up to two Card Readers including two card reader/keypad combinations for high security applications, Magnetic Stripe or **i Button™** Readers, as well as many other popular Reader technologies such as: **WIEGAND, PROXIMITY, BARIUM FERRITE, INFRA-RED, BAR CODE, BIOMETRIC, RADIO FREQUENCY**

The TA-2490 Access Control Panel is also **Backwards Compatible** with Cansec's CP30 Access Control Panel via an on-board jumper to select CP30 compatible mode.

The TA-2490 supports TAC's proprietary Wiegand format as well as any reader technology with a standard 26 bit Wiegand Output. For support of other custom Wiegand formats, contact TAC Systems Ltd.

The TA-2490 Database is downloaded from a PC running TAC's Windows Based Maestro or DOS & OS/2 Based PassMaster Software packages. The TA-2490's **Backed-Up Memory** ensures that the panel will retain all downloaded data in the event of a power or communication failure. TA-2490's can support up to 65,000 user (card) identification numbers depending on the capacity of the host software. Since all access control decisions are made locally, the response time at the readers are minimal. Up to 2,000 transactions can be stored in the TA-2490 in the event the the host PC is off-line.

The TA-2490 is also equipped with two spare supervised inputs and two open-collector outputs which may be used for point monitoring and control. When these four spare points are not sufficient, an **Optional Input / Output Module** may be added for Supervised Point Monitoring and Output Control of 16 points. This optional board is not required for monitoring door contacts on doors with access control readers installed as dedicated door contact inputs are available on the TA-2490 controller. The SIOPT-16 board may be added at any time by installing the module in the same cabinet as the TA-2490.

Elevator Control Systems are also available in 16, 32, 48, or 64 Floor configurations. For 16 floor configurations, an additional elevator output module is mounted on top of the TA-2490 board. When 32 to 64 floor configurations are required, an additional cabinet containing the required elevator output modules is supplied. When a valid card is presented and granted access to any floors, the corresponding Elevator Relay Outputs will turn ON momentarily. These outputs are interfaced with the elevator manufacturers control system which in turn enables the floor buttons. Floors can also be programmed with "Floor Unlock Schedules" to allow free access during the times specified in the schedule.

TA-2490 Specifications: Consult installation manual for complete list of specifications.

Power Requirements	16VAC,40-75VA,60HZ
TA-2490 Cabinet Dimensions	13 1/8"(W) x 19 3/8"(H) x 3 5/8"(D)
Total Max. Weight of TA-2490 Unit	18.5 Lbs./...8.4 Kg.
Battery Backup:	Battery: Optional, use 12VDC Lead Acid Battery
	Battery Charger: Current Limited, allows 2.5Amps for TA-2490 and all devices
	Battery Test: Runs twice a day for one minute to ensure battery reliability
Output Relays:	Lock (2 per Panel): jumper selectable for 12VDC out or dry contact, SPDT 8A @ 24VDC
	Comm Fail: SPDT 2A @ 28VDC
	Alarm Shunt , Door Held Open, Forced Entry (2 each Per Panel): SPDT 2A @ 28VDC
Door Contact Inputs (2 per Panel):	normally closed door contact
Exit Button Inputs (2 per panel):	Powered circuits (5V), normally open, momentary closure required (Supervision on Door Contact and Exit Button Inputs Optional)
2 Spare Inputs:	Normally Closed, Supervised with TAC End-of-Line Resistor Pack
2 Spare Outputs:	Maximum current sink 30VDC @ 250 mA



360 Carlingview Drive
Toronto, Ontario,
Canada, M9W 5X9
Tel: (416) 798-0611
Fax: (416) 798-1349
<http://www.kmthomas.com>

i Button™ is a registered trademark of Dallas Semiconductor Corp.

Distributed by:

The TA-2501 is a Power Limited Power Supply with Chargers that will convert 115VAC 50/60Hz input, into two individually PTC protected 12VDC or 24VDC outputs (see specifications). It is intended for use in applications requiring UL Listing for Access Control (UL294) and applications requiring an interface with Fire Alarm Control Panels.

12VDC or 24VDC @ 1 Amp supply current with large enclosure.



Features

- Two (2) 12VDC or 24VDC, Class 2 Rated power limited outputs.
- Filtered and electronically regulated output. *
- Input 115VAC 50/60Hz rated @ 0.6 Amp.
- Built-in charger for sealed lead acid or gel-type batteries.
- Maximum charge current: 400mA.
- Automatic switch over to stand-by battery when AC fails.
- AC power and unit status indicator on the front panel.
- Normally Open [NO] trigger input.
- Supervised Fire Alarm Disconnect (Latching w/reset or Non-Latching).
- Accommodates up to two (2) 12VDC/7AH battery (batteries not included).

*Note: When unit is powered by battery back up (AC Fail condition) the voltage range is 9.3V-13.2V and 19.55V-26.4V for 12 and 24 volt operation respectively.



UL Listed for Access Control System Units
(UL 294).



CUL Listed - CSA Standard C22.2 No.1-98, Audio, Video and Similar Equipment.

The TA-2525 power supply is specifically designed for use with access control systems and accessories. This unit converts a 115VAC / 60Hz input into five (5) individually protected Class 2 Rated power limited 12VDC or 24VDC outputs (see specifications). Each output will route power to a variety of access control hardware devices including Mag Locks, Electric Strikes, Magnetic Door Holders, etc. These outputs will operate in both Fail-Safe and Fail-Secure modes. Controlled trigger input is achieved through normally open (N.O.) or normally closed (N.C.) supervised input or the polarity reversal from an FACP (Fire Alarm Control Panel). A form "C" dry output relay enables HVAC Shutdown, Elevator Recall or may be used to trigger auxiliary devices.



Features

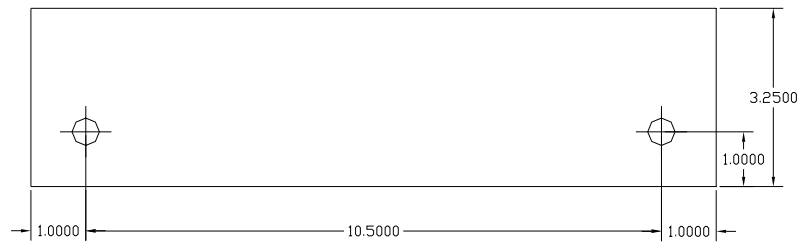
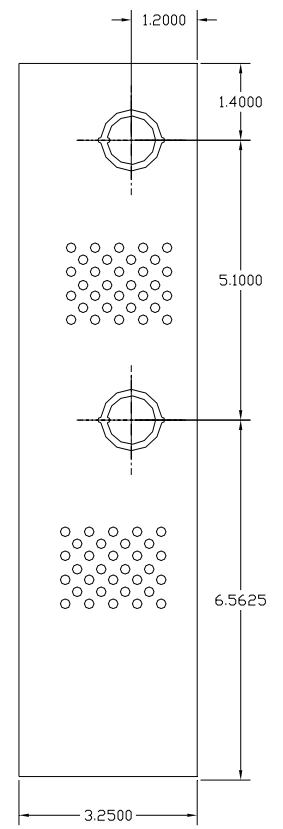
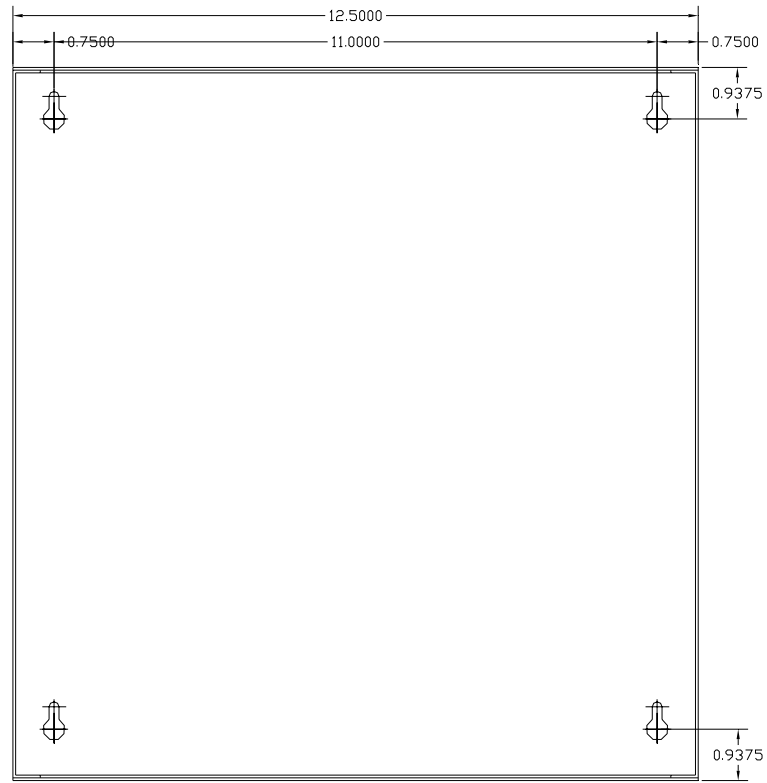
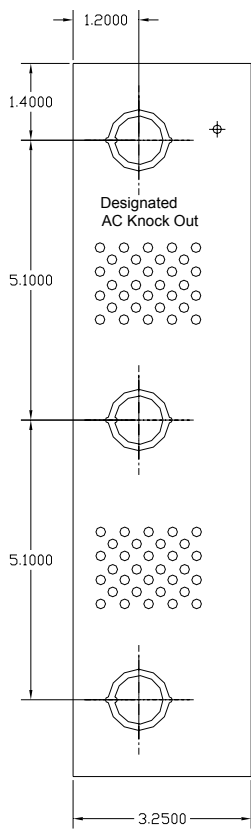
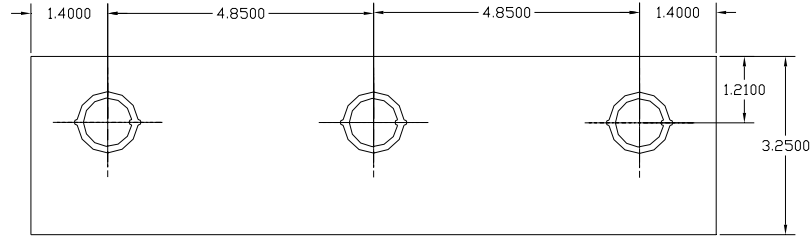
- 12VDC or 24VDC selectable output.
- 2.5 Amp supply current.
- Five (5) individual Class 2 Rated power limited outputs rated @ 2.5 Amp.
- Input 115VAC / 60Hz, 1.45 Amp.
- Input fuse rated @ 3.5 Amp/250V.
- Fire Alarm Panel or Access Control System trigger inputs. N.O. or N.C. supervised trigger input and polarity reversal trigger input.
- Output relay energizes when unit is triggered (form "C" contact rated 1 Amp @ 28VDC).
- Power fail supervision relay (form "C" contact rated 1 Amp @ 28VDC).
- Filtered and electronically regulated output.
- Short circuit and thermal overload protection.
- Built-in charger for sealed lead acid or gel-type batteries.
- Maximum charge current 0.7 Amp.
- Automatic switch over to stand-by battery when AC fails (zero voltage drop).
- AC fail supervision (form "C" contacts).
- Low battery supervision (form "C" contacts).
- Battery presence supervision (form "C" contacts).
- AC input and DC output LED indicators (power supply board).
- Red LEDs indicate condition of power outputs (multi-output board).
- Power & input trigger LEDs (multi-output board).



UL Listed for Access Control Systems Units (UL 294).
UL Listed Standard for Power Supplies for Use with Burglar-Alarm System Units (UL 603).
UL Listed Hospital Signaling and Nurse Call Equipment (UL 1069).
UL Listed Standard for Safety for Fire Protective Signaling Systems (UL 1481).



CUL Listed - CSA Standard C22.2
No.205-M1983 Signal Equipment.



These multi-output access control power supplychargers are specifically designed for use with access control systems and accessories. These units convert a 115VAC / 60Hz input into five (5) individually protected Class 2 Rated power limited 12VDC or 24VDC outputs (see specifications). Each output will route power to a variety of access control hardware devices including Electromagnetic Locks, Electric Strikes, Magnetic Door Holders, etc. These outputs will operate in both Fail-Safe and Fail-Secure modes. Controlled trigger input is achieved through normally open (N.O.) or normally closed (N.C.) supervised input or the polarity reversal from an FACP (Fire Alarm Control Panel). A form "C" dry output relay enables HVAC Shutdown, Elevator Recall or may be used to trigger auxiliary devices.



Features

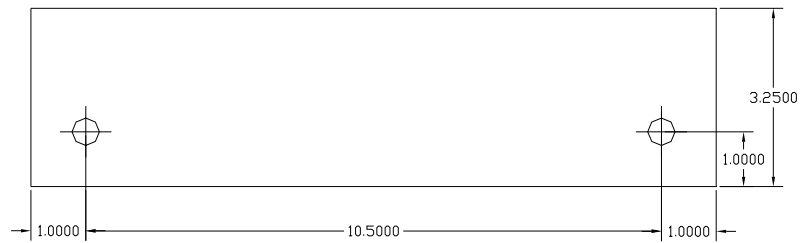
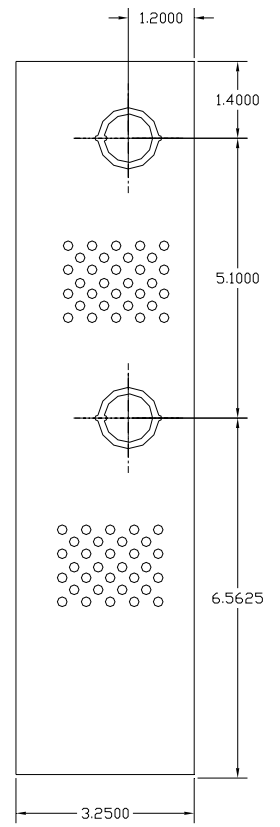
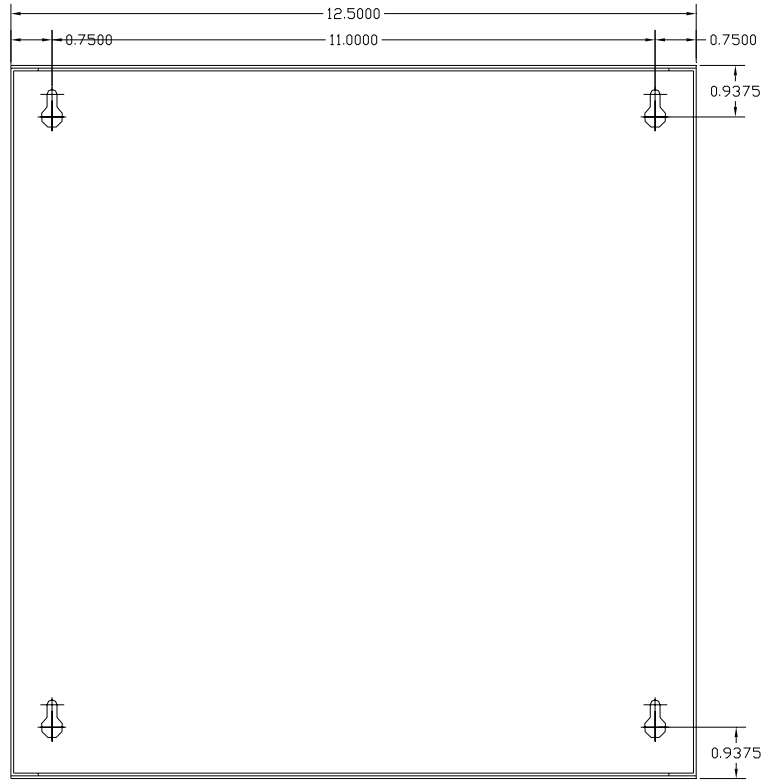
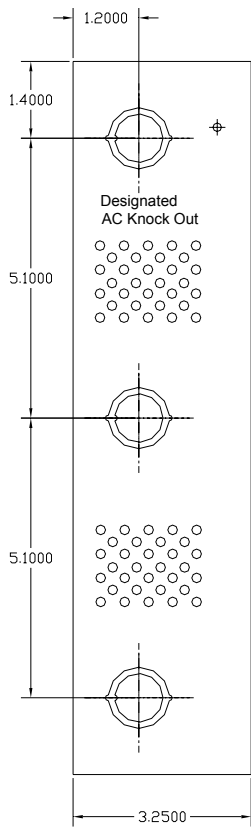
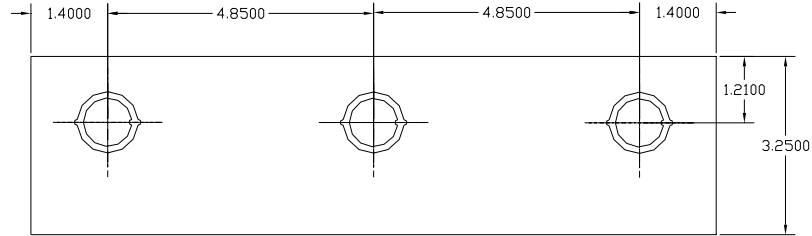
- 12VDC or 24VDC selectable output.
- 6 Amp supply current.
- Five (5) individual Class 2 Rated power limited outputs rated @ 2.5 Amp.
- Current limit is 12VDC or 24VDC @ 2 amp per output.
- Input 115VAC / 60Hz, 1.45 Amp.
- Input fuse rated @ 3.5 Amp/250V.
- Fire Alarm Panel or Access Control System trigger inputs. N.O. or N.C. supervised trigger input and polarity reversal trigger input.
- Output relay energizes when unit is triggered (form "C" contact rated 1 Amp @ 28VDC).
- Power fail supervision relay (form "C" contact rated 1 Amp @ 28VDC).
- Filtered and electronically regulated output.
- Short circuit and thermal overload protection.
- Built-in charger for sealed lead acid or gel-type batteries.
- Maximum charge current 0.7 Amp.
- Automatic switch over to stand-by battery when AC fails (zero voltage drop).
- AC fail supervision (form "C" contacts).
- Low battery supervision (form "C" contacts).
- Battery presence supervision (form "C" contacts).
- AC input and DC output LED indicators (power supply board).
- Red LEDs indicate condition of power outputs (multi-output board).
- Power & input trigger LEDs (multi-output board).



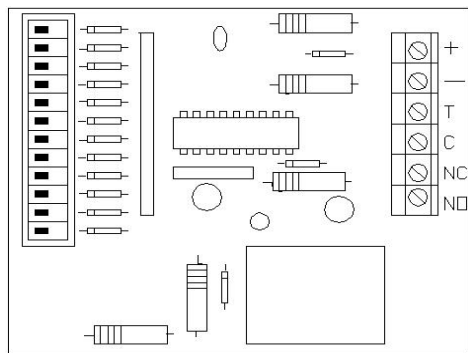
UL Listed for Access Control Systems Units (UL 294).
UL Listed Standard for Safety for Fire Protective Signaling Systems (UL 1481).



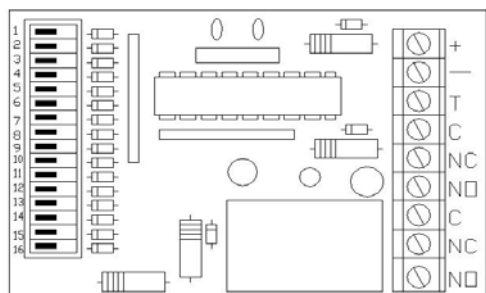
CUL Listed - CSA Standard C22.2
No.205-M1983 Signal Equipment.



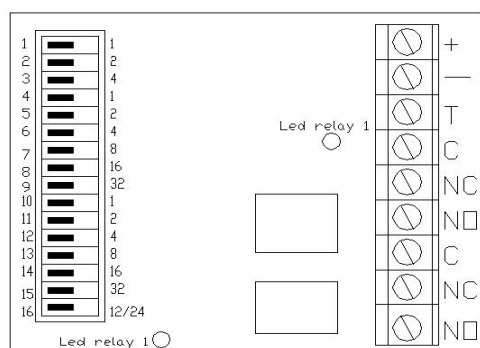
Timers



TA-2671 (1 sec. To 4h)	
Electrical Spec.	Features
Operates from 12 to 24VDC	Adjustable from 1 Second to over 4 Hours with LED Status Indicator
Current Draw: Idle: <12mA Operation: >60mA	Microprocessor Based and Controlled by Analogic Clock for Accuracy of 2%
SPDT Relay Output, 5 amp at 24 VDC Contact	Adhesive Foam Mounting Tape
	DIP Switch Programmable
	Dimensions: Length: 3.000" Width: 2.000" Height: 0.875"
	6 Modes of Operation: Delay on Operate Delay on Release Latching #1, Latching #2 Pulsing #1, Pulsing #2



TA-2672 (1 sec. to 34h)	
Electrical Spec.	Features
Operates from 12 to 24VDC	7 Modes of Operation: Delay on Operate, Delay on Release, Window, Latching #1, Latching #2, Pulsing #1, Pulsing #2
Current Draw: Idle: <12mA Operation: >60mA	Adjustable from 1 Second to 34 Hours with LED Status Indicator
DT Relay Output, 5amp at 24VDC Contact	Adhesive Foam Mounting Tape
	DIP Switch Programmable
	Dimensions: Length: 3.000" Width: 2.000" Height: 0.875"
	Microprocessor Controlled



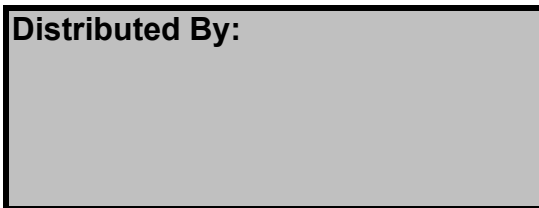
TA-2673 (Interface Timer)	
Electrical Spec.	Features
Operates from 12 to 24VDC Selectable by DIP Switch #16	LED Status Indicator
Electrial Draw: Idle: <12mA at 12VDC Active: <70mA at 12VDC	Dimensions: Length: 3.00" Width: 2.10" Height: 0.65"
Two SPDT Relay Output, 2A at 24VDC Contact	Three Adjustable Sequential Timers Controlled by Microprocessor: Trigger Delay: 0-7 seconds Timer #1: 0-63 seconds Timer #2: 0-63 seconds



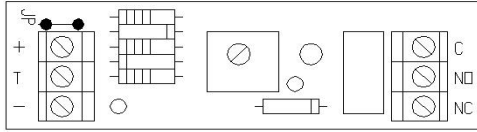
360 Carlingview Drive
Toronto, Ontario
Canada, M9W 5X9

Ph: 416-798-0611
Fax: 416-798-1349

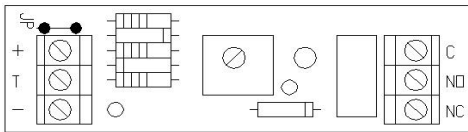
Distributed By:



Timers



TA-2615	
Electrical Spec.	Features
Operating Voltage: 12 to 24VDC	Adjustable Delay from 2 to 15 Seconds
Electrical Draw: Idle: 10uA Active: 40mA	Negative Trigger
SPDT Relay	The Cycle Starts on Release of the Contact Connected to the Trigger
Contact Rating with Resistive Load: 0.5A at 110VAC	Dimensions: Length: 2.650" Width: 0.850" Height: 0.625"



TA-2660	
Electrical Spec.	Features
Operating Voltage: 12 or 24VDC	Adjustable Delay from 5 to 60 Seconds
Electrial Draw: Idle: 10uA Active: 40mA	Negative Trigger
SPDT Relay	The Cycle Starts on Release of the Contact Connected to the Trigger
Contact Rating with Resistive Load: 0.5A at 110VAC 2A at 24VDC	Dimensions: Length: 2.650" Width: 0.850" Height: 0.625"

Junction Box



TA-2901 (Junction Box)
Hinged Cover with Twist Lock
Conduit Knock Outs
Size: 10" x 10" x 4", Ideal for Mounting Electronic Componants
22 Position Terminal Strip for Tidy Installations



360 Carlingview Drive
Toronto, Ontario
Canada, M9W 5X9

Ph: 416-798-0611
Fax: 416-798-1349

Distributed By: